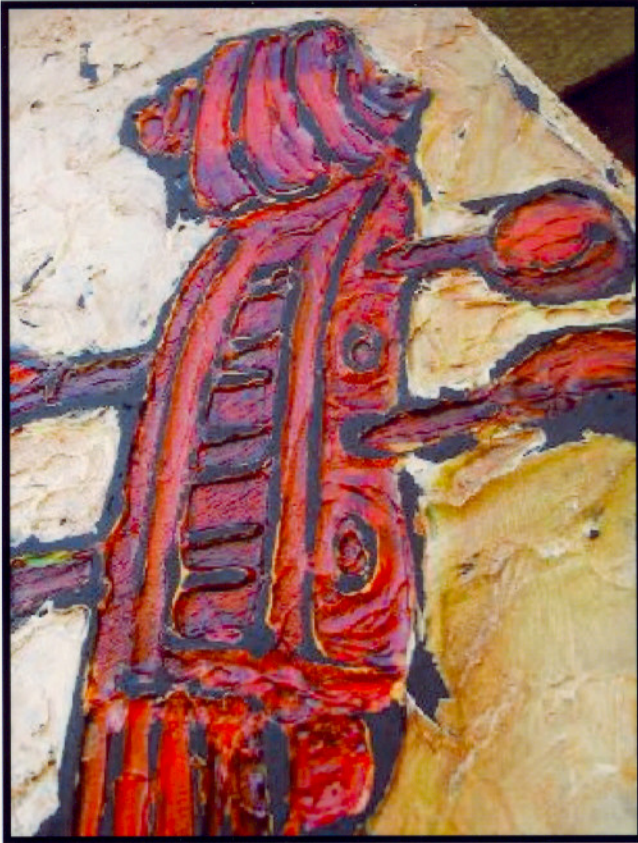
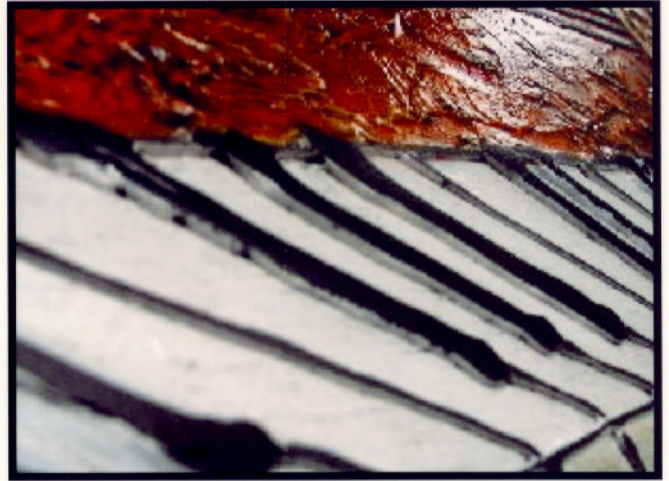


# Texture Detail



Chrissandra's work is based on textured acrylic paint that produces a rich and colorful composition. She constructs framed panels on mahogany plywood to support the weight and material composition of the paintings; next she sculpts out the black lines which protrude giving the appearance that it is carved out of the board it is painted on; then fills in the areas with more textured medium. Sometimes this texture and depth can be difficult to detect from photographs.



# Framing Method

Minimal, contemporary style.

1" x 2" kiln dried fir for warp control, extra support and stability.

Painted black.

Personal framing style/design is easily added if desired.

